

PN-1400-0102-01-Model# MTW-0400-4030-01 – 400-4000 MHz LNA MODULE

Feature

- **Wideband Frequency :400– 4000 MHz**
- **High Gain of >25dB**
- **Noise Figure <2.0 dB**
- **P1dB > 22 dBm**
- **DC Power Through Output port: 7-15 VDC or DC feed through**
- **Input/output Connectors SMA-F**
- **Environmentally sealed Module for Outdoor**

Overview

The MTW-0400-4030-01 LNA module is intended for use in the common data frequency bands from 680-3800 MHz, with an input power limiting diode to reduce interference from other high power transmitters.

The LNA module is housed in an environmentally sealed enclosure for outdoor use, from -40°C to 55°C.

The module can be powered through the RF output connector or the DC feed through connector.

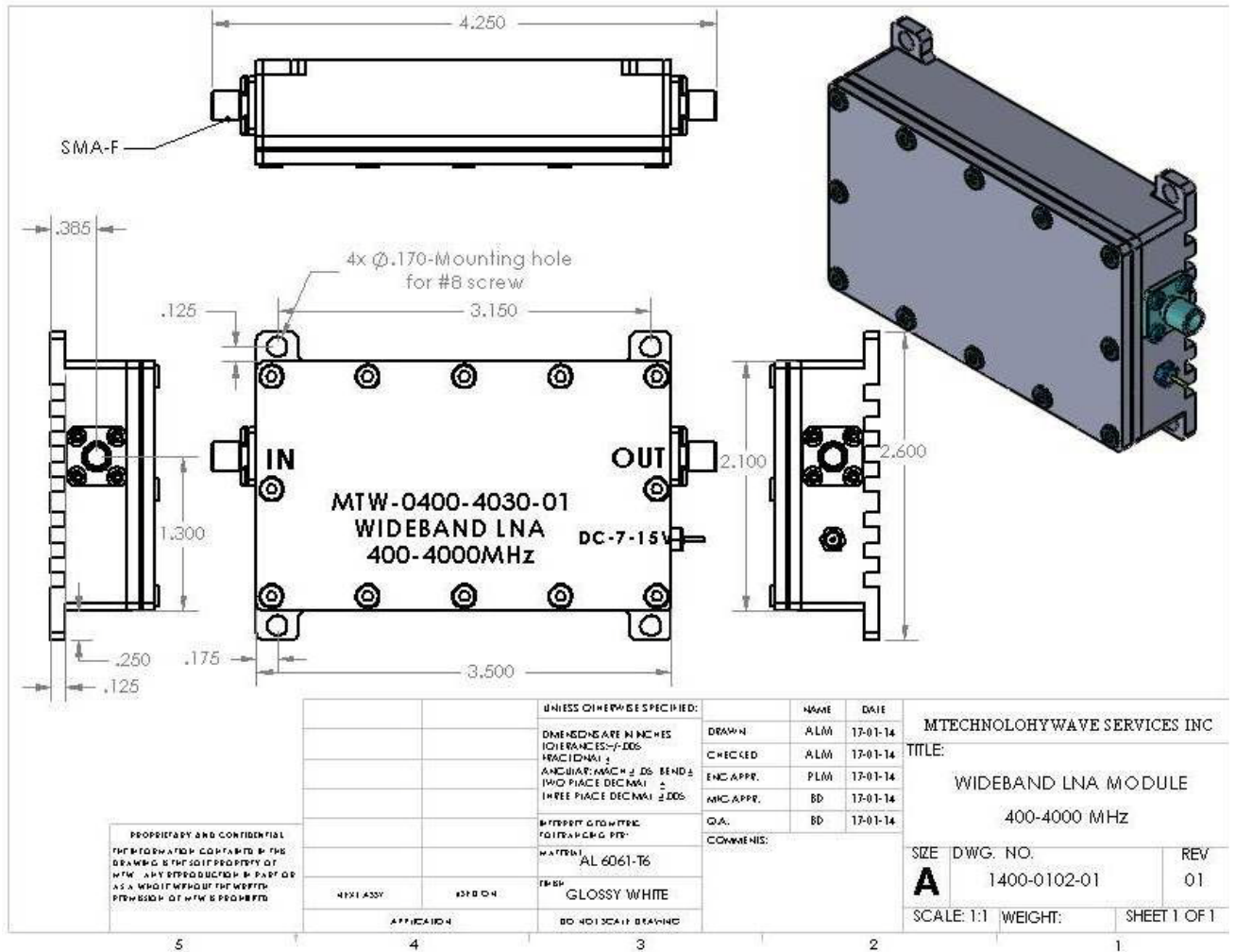
The LNA module is designed to pick up power supply (7-15 VDC) from the output port connected outdoor-input cable linked to the indoor system; or for indoor systems connection can be through the DC feed through connector..

Overall LNA-Module Specification

Parameter	Description
Frequency Band	400 – 4000 MHz
Gain	>25 dB
Output Return Loss	>12dB
Input Return Loss	>6.5 dB
P1dB	22 dBm
Overall Module Noise Figure	<2.0 dB
Reverse Isolation	>40 dB
DC Power Supply	7-15 VDC @ 0.25 Amp
Power Rating	3.75W max.
Impedance	50Ω nominal
RF Interface Connector	2-Ports SMA-F with O-Ring
DC Interface Connector	Output RF SMA-F or DC EMI filter feed through
Environmental	-40 to 55°C, Sealed for Outside Mounting
Overall Dimensions	3.50"x2.60"x0.88"
Paint	Glossy White - UV

©2013 MTechnologywave Services Inc. All rights reserved. MTechnologywave Services Inc and logo are registered trademarks of Mtechnologywave Services Inc. All other trademarks are the property of their respective owners

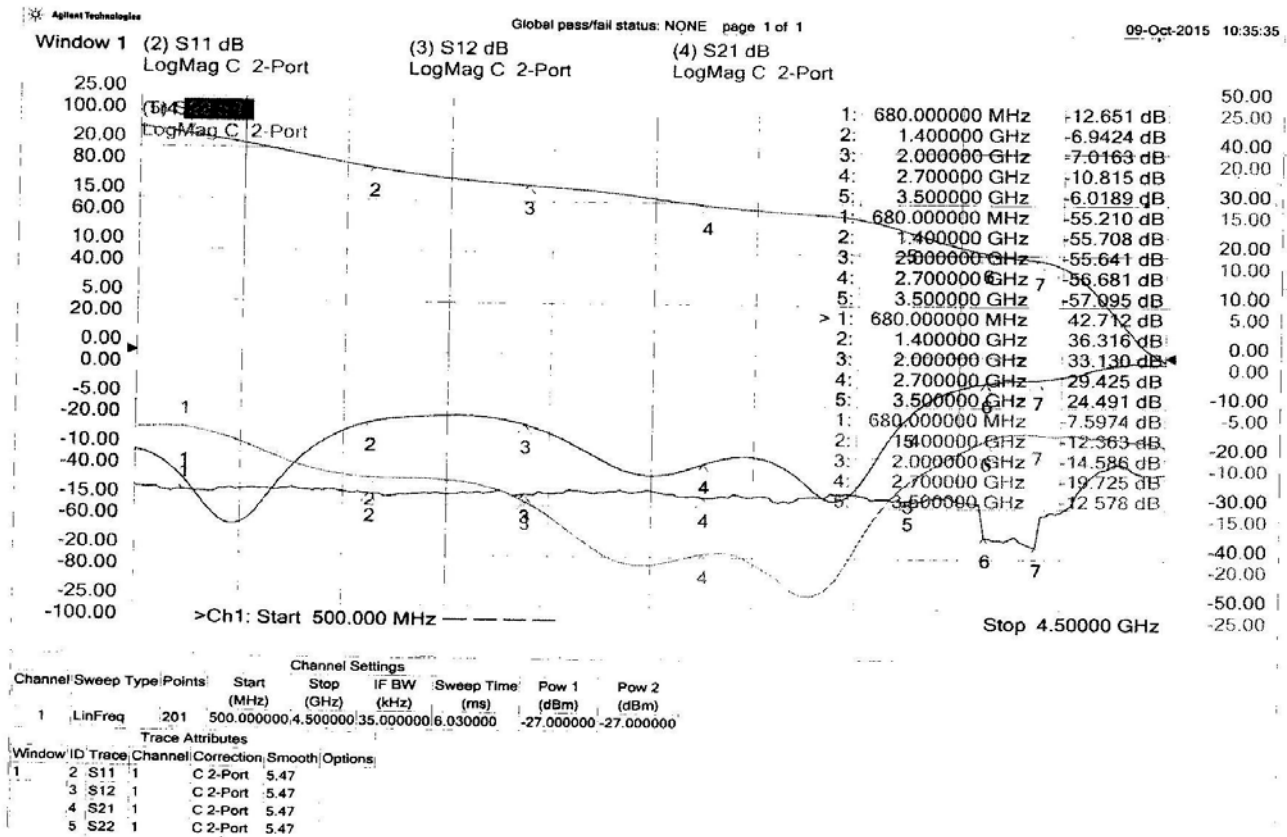
1400-0102-01 – LNA Module Mechanical Drawing



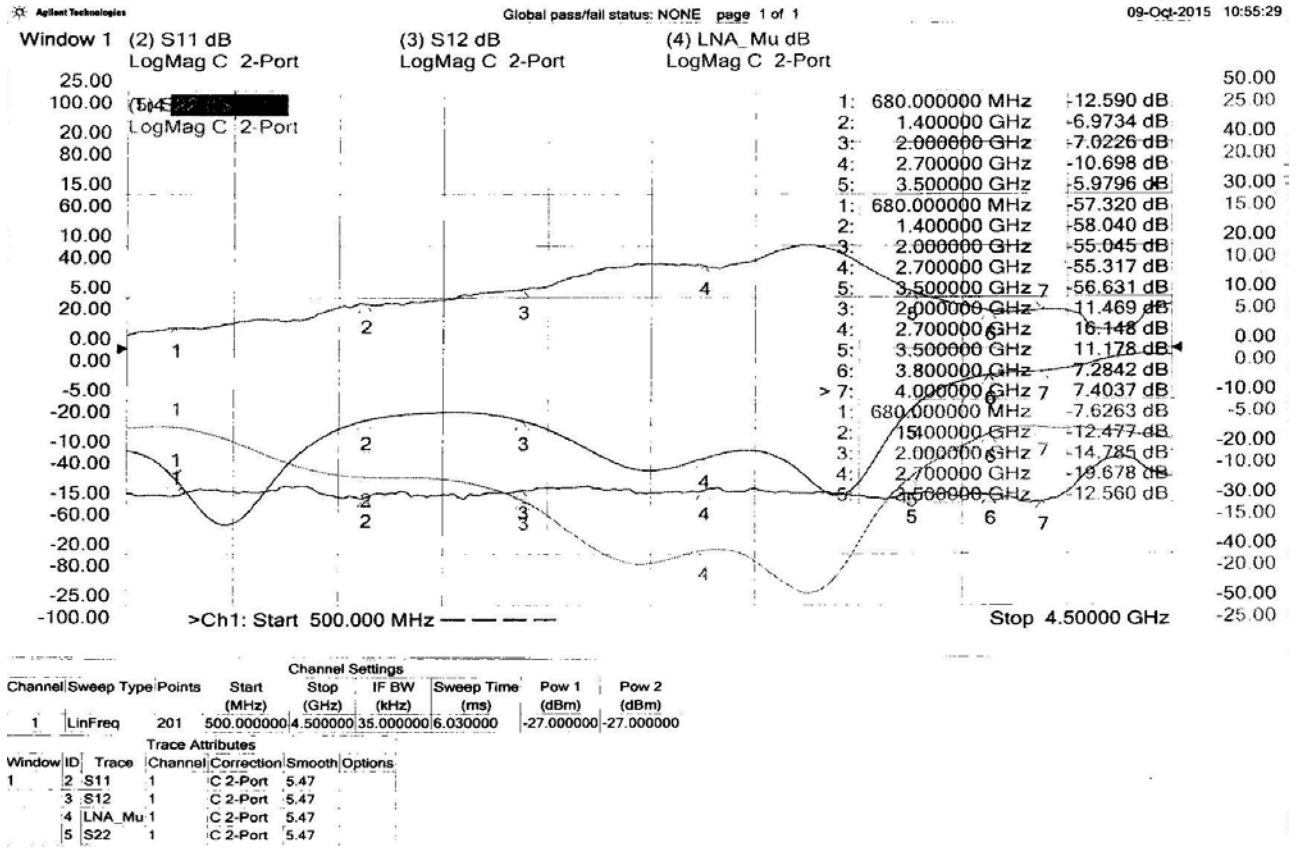
MTW-0400-4030-01 – MODULE PICTURE



MTW-0400-4030-01 – S11, S21 & S22 –TYPICAL



MTW-0400-4030-01 - MuFACTOR TYPICAL



MTW-0400-4030-01 – KFACTOR TYPICAL

